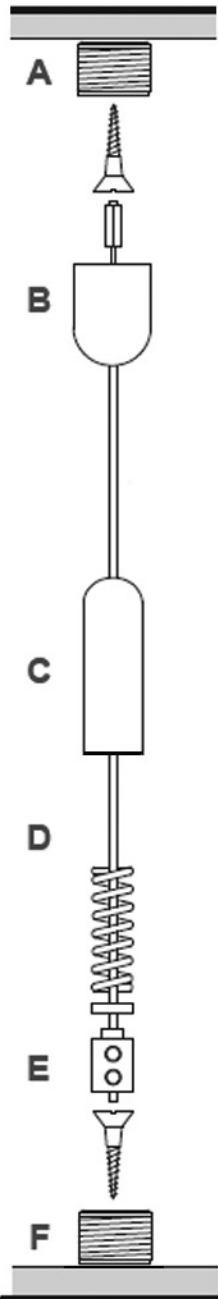
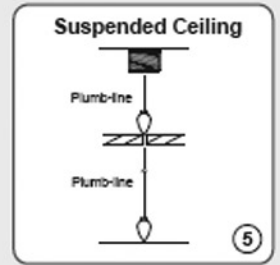
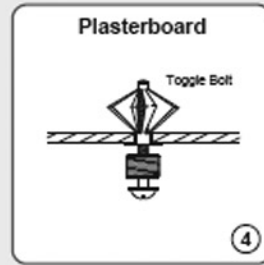
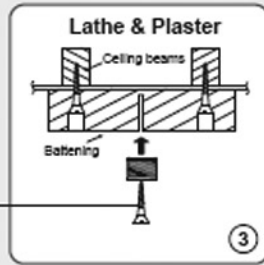
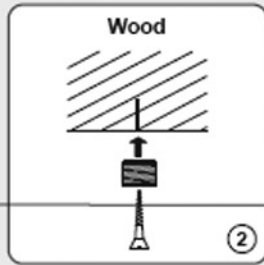
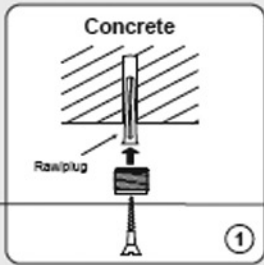


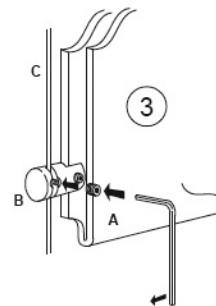
## 1.5mm Cable Display Systems - INSTALLATION GUIDELINES



### Floor to Ceiling - Cable Installation

- 1) Fix fitting (A) to ceiling.
- 2) Directly below the (A) fitting, fix fitting (F) to the floor.
- 3) Screw fitting (B) to fitting (A).
- 4) Loosen the screws on fitting (E) and cut the cable 1/4" above the (B) fitting.
- 5) Tighten screws on fitting (E) making sure fitting (E) is at the bottom of the cut cable.
- 6) Screw fitting (C) to fitting (F)
- 7) Repeat steps 1 to 6 for additional cables.

Cables should be placed 9 7/8" apart for portrait acrylics  
 Cables should be placed 12 3/8" apart for landscape acrylics



### Acrylic Installation

- 1) Fit cable into hardware on acrylic.
- 2) Insert small screws provided into hardware and tighten.
- 3) Repeat steps until all small screws are used.

